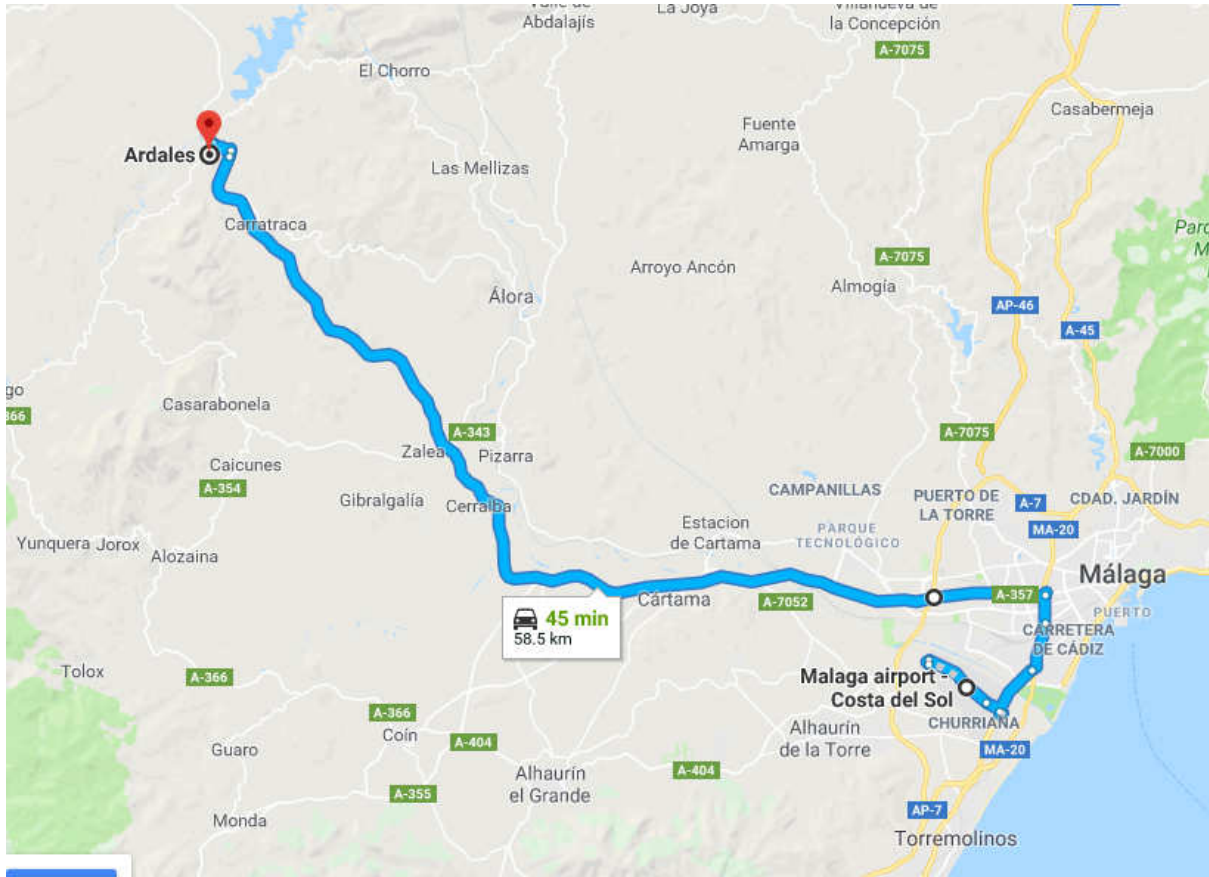


Malaga Airport to Ronda 29400 (via Ardales)

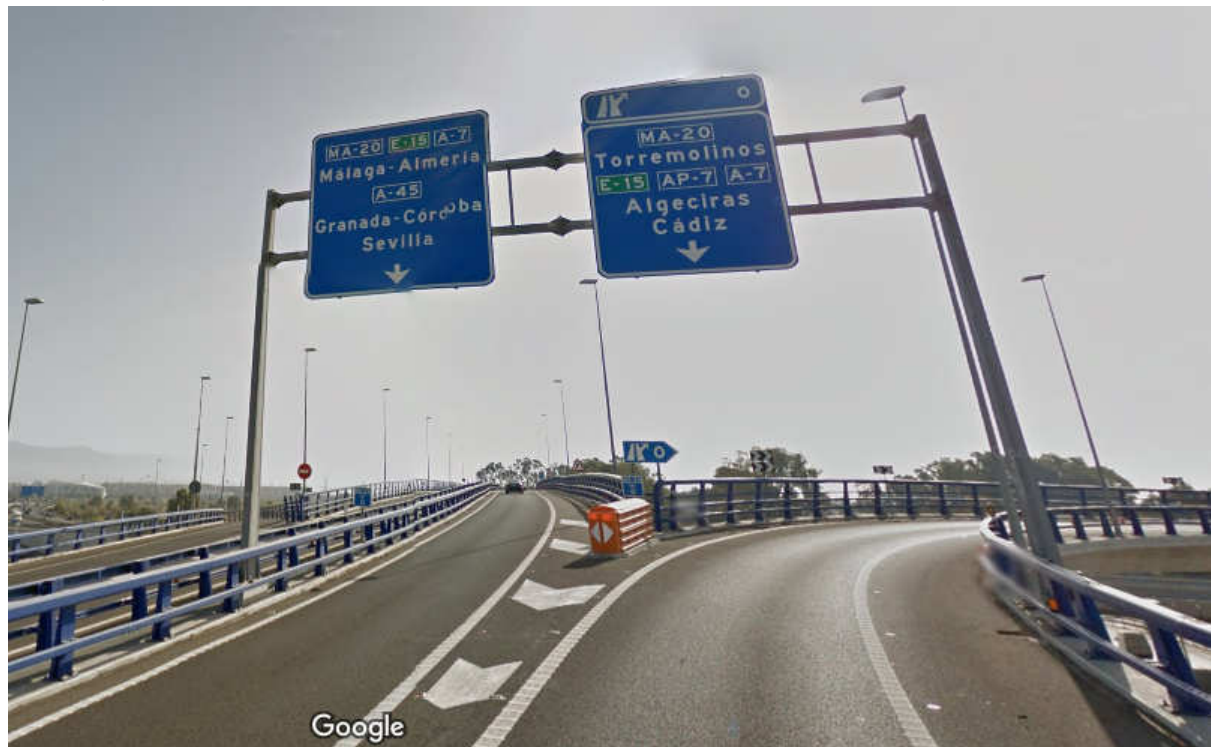


Take the MA-23 from the Airport to connect with the MA-20 Eastbound for Malaga City



Picture from **the MA-23** looking towards the Leroy Merlin tri-angular sign, and a Decathlon store down on your right.

Keep on the left lane for **MALAGA, ALMAREA, GRANADA, MA-20, E-15, A-7 SEVILLA, CORDOBA A-45**



MA-23 Loops off onto the MA-20 Malaga direction.



Keep on the MA-20 (the first exit, you are now at exit 5) Heading East



After Junction 6, prepare to exit onto Exit 7 Direction A-357 Cartama, using the lane on the right hand side.



Placio de Ferias, Landmark Exhibition centre on your left, **keep in the right lane for Exit 7**



3 lanes now, keep to the right or middle lane for a-357 Cartama (Universidad)



Now move to the left-hand lane for Exit 7 for the A-357



A single lane now goes on a bit, parallel to the MA-20 on your left, and eventually starts to verge to the right, rises and brings you over the MA-20, and onto the A-357 heading Northbound.



Having gone around and over the MA-20, you now merge onto the **A-357** towards **Campillos**



YOU ARE NOW LEAVING MALAGA CITY

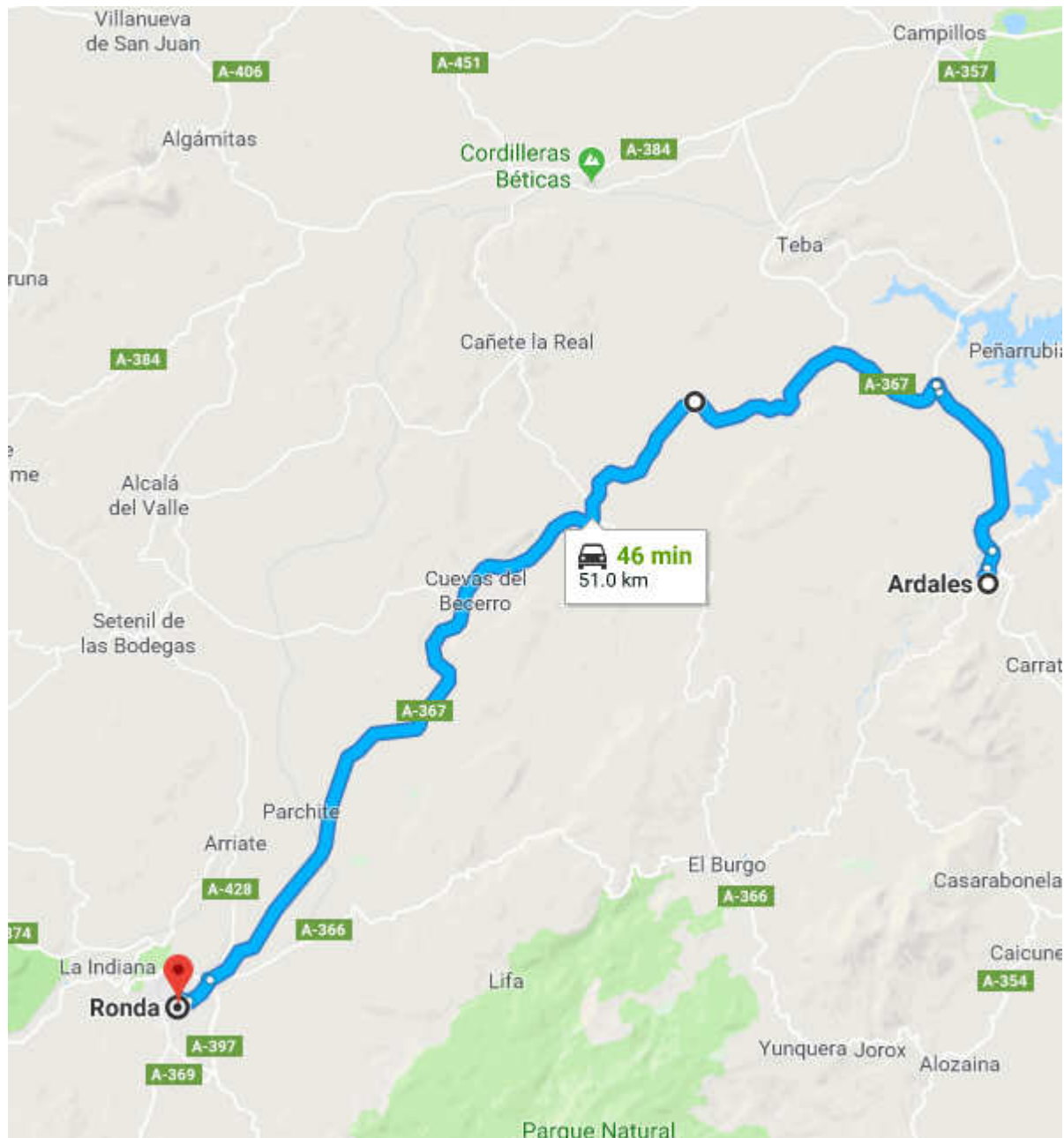
Dual carriage way lasts about 20 min 120kph onto a more minor road of 100kph

You are going in a Northerly direction towards **Campillos**, but turning off for **Ronda A-367** after passing **Ardales**. This part takes about 40 min and is 45km

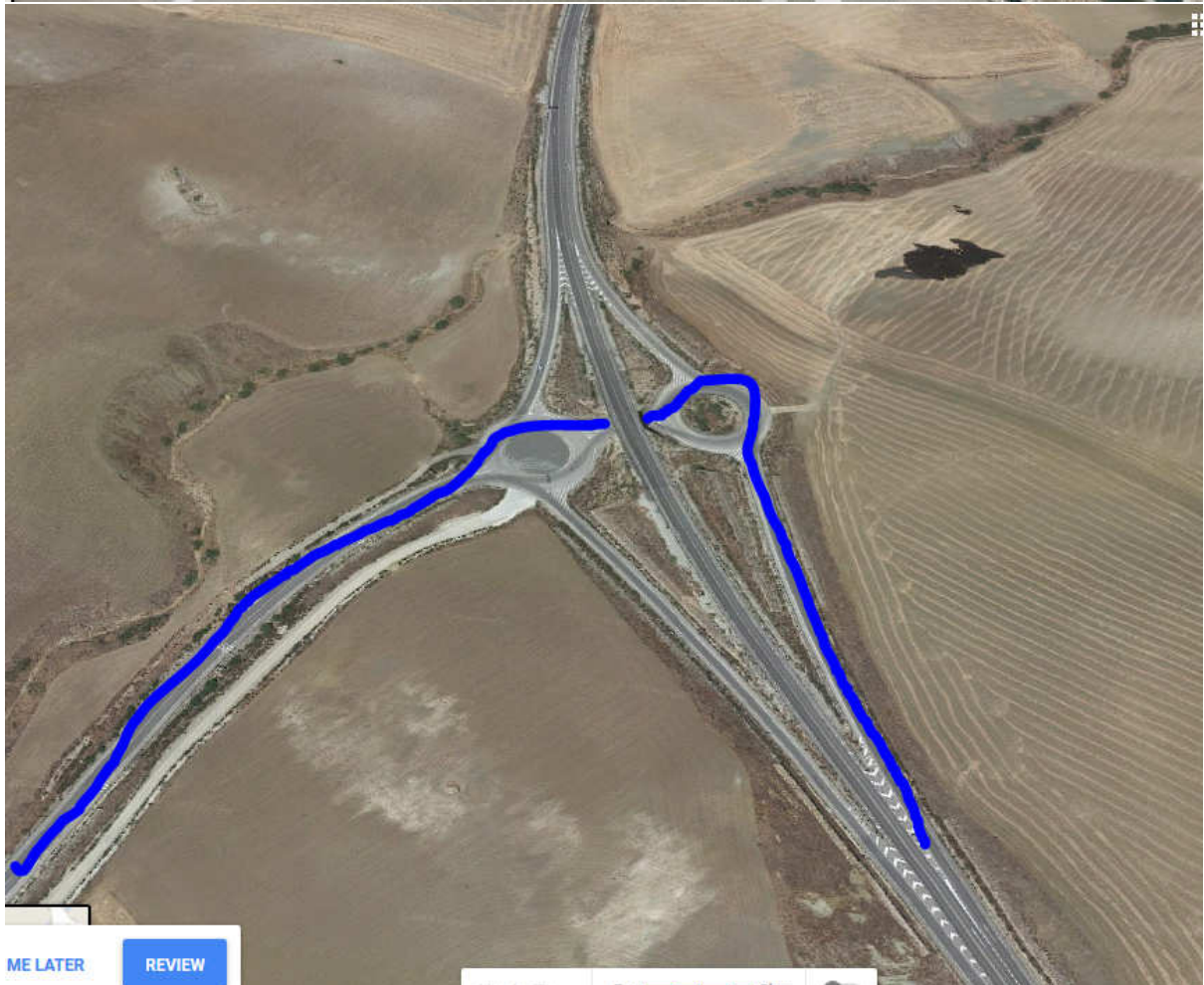
Ardales – White Village on your left



Continue along the A-357 past Ardales, still in the direction for Campillos and after about 5km we turnoff for Ronda A-367



About to turn off for Ronda A-367



You are now on the a-367 for Ronda, heading now South West, your speed will be restricted to a maximum of 90kph

Shortly after the turn off for Teba you'll see a furniture shop on your left,



Just after it is El Mason De Diego, feeder lane in center of road, to turn left



Great Coffee and Tapas, BBQ grill and dining room, & restrooms, you're more than half way to Ronda, good chance of a break.



Continue on towards Cuevas del Bacerro (Caves of the Calf)

Your speed will be restricted to a maximum of 90kph until Ronda, but note 50kph through Cuevas. The crossroads in the centre is infamous for Police checkpoints, and you will get fined.



Arriving into Ronda, you come to what are known as speed roundabouts, with various lanes, which people are supposed to merge without actually stopping (but not everyone has been told)



Merge from the right lane, yielding to traffic coming from your left



Now merge onto the centre lane



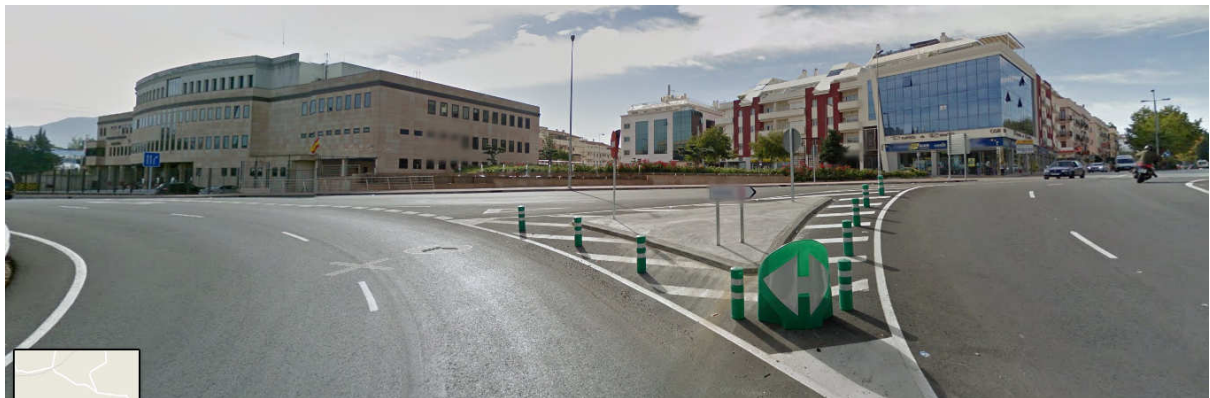
Stay in the centre



A-397 for San Pedro – Algeciras, turning left in the same lane at the bollard.



Still keeping in centre lane, go past fire station



Now, same lane but exiting right



Notes: Popular fines

Not Stopping at a Stop sign.

Not Indicating off a roundabout.

You must leave 1.5m distance between you and a cyclist, if it is safe to do so, you can cross a single white line. (in return, cyclists not in single file do get booked)

Single white lines generally mark the sides of the roads, DO NOT STOP or cross unless the line is broken. Even with a flat or vomiting child, keep going with hazards on until you find a broken line, and layby.

Keep to the speed limits, they are generally geared towards traction rather than restriction, so you stay on the road, especially on country roads.

Keep seat belted in a normal sitting position, no arms out windows, knees/feet on the dash and don't drive in sandals or flip flops.

Both mobile and fixed Radars are numerous, as well as fixed Radars between points, which check your average speed between cameras.

This really only applies to the big cities.....

ONLY Stop for the police in Uniform (Guardia Civil – Trafico), you will not be stopped by detectives in plain clothes, plain car and flashing lights, if in doubt, lock your windows and doors, and call 112 for confirmation.

Heavily armed checkpoints are regular, don't worry, they're only looking for the baddies.

Best guide for driving in Spain, from off duty Guardia Civil volunteers in English

<http://n332.es/>

Other emergencies in Spain

Ambulance (ambulancia) and health emergencies

Call 061 or 112

Fire brigade (cuerpo de bomberos)

Call 080 or 112

Local police (policía municipal)

Call 092. The municipal police cover their local town or city area for traffic offences and control, lost property and crimes such as theft and neighbourhood disputes.

Civil Guard (guardia civil)

Call 062. This is a military force that operates mostly in rural areas and is responsible for drug offences, fatal car accidents, robberies and murders.

National Spanish police (policía nacional)

Call 091 or visit www.policia.es and contact the appropriate department online. You can also find them on Twitter @policia

The national police mainly work at an urban level in the areas of terrorism, national security and combating crime.

